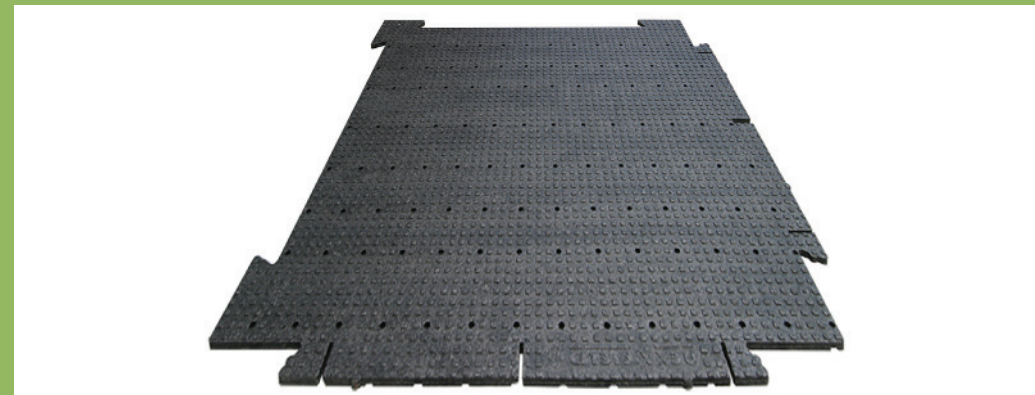




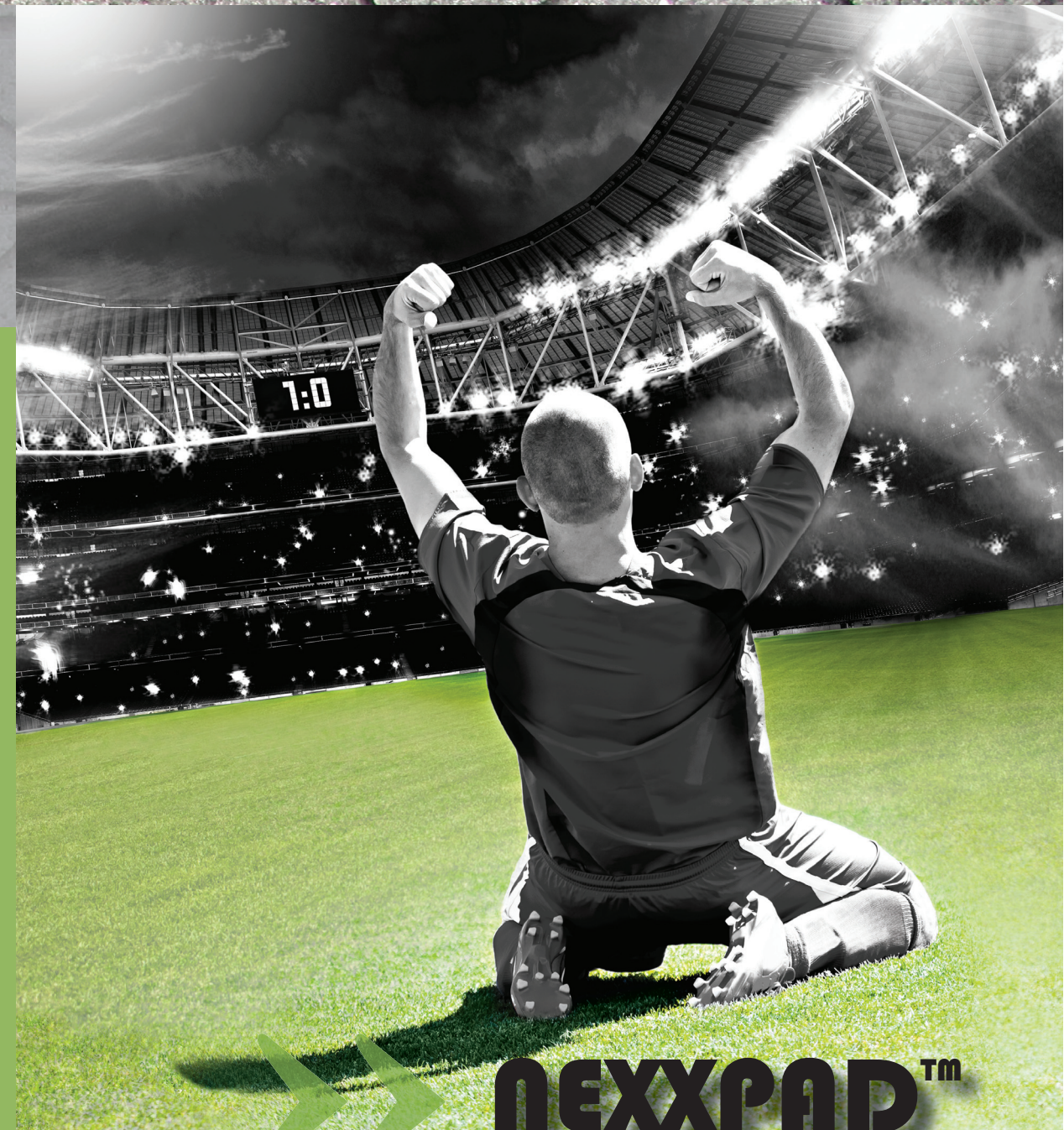
Nexxfield products were subjected to numerous performance and wear tests both in laboratories and in everyday use, thus surpassing existing industry standards.

- Effective regardless of the season;
- Fiber configuration ensuring long-term performance and safety;
- A unique underlayment;
- A product designed for safe play.

WELL THOUGHT-OUT ARTIFICIAL TURF SYSTEMS



www.nexxfield.com



NEXXPAD™



NEXXPAD™

NexxPAD™ uses an exclusive patent pending design process which optimizes shock absorption and energy restitution. The unique density-thickness-geometry combination maximizes energy restitution and provides a comfortable surface with one of the highest energy restitution rate on the market. The NexxPAD™ PROFILE is an individually molded pad containing a blend of polyolefin foam predominantly closed-cell. The NexxPAD™ is manufactured in an environmentally responsible manner without fluorinated or chlorinated hydrocarbons (FCHCs).

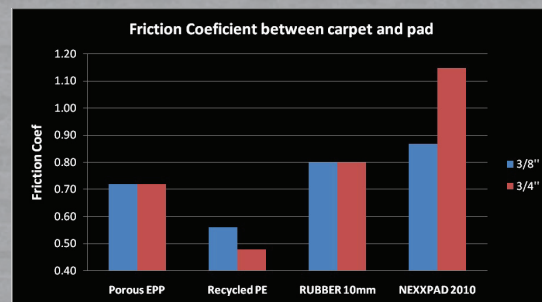
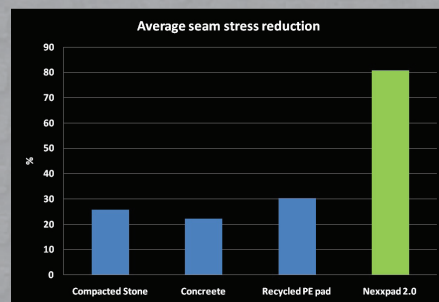
By using RAC (Rebound Air Control), Nexxdrain and patent pending CAS (Carpet Anti-Slip) technologies, NexxPAD™ is actually the ultimate component for uniform ball behavior, optimal drainage, turf stability and seam protection.



C.A.S (CARPET ANTI-SLIP)

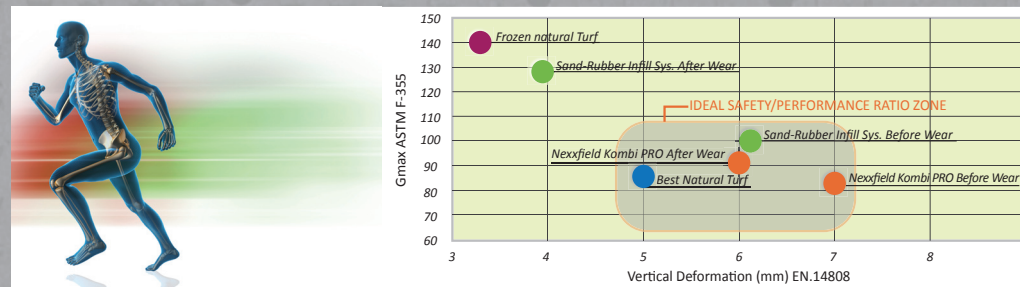
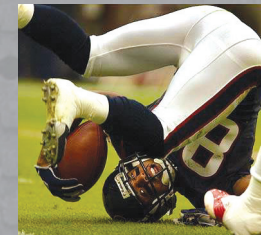
Artificial turf systems are subject to high shear force applied by athletes during rapid changes of direction and scrum. Turf systems need high friction with the base or the pad to prevent carpet movements. The C.A.S technology provide higher carpet stability than just a normal 100% rubber infill laid on compact stone and other regular system configurations. The Carpet Anti-Slip technology is patent pending and is exclusive to NEXXPAD.

During scrum an other brutal actions imposed on the sport surface, some shear stresses are directly transferred to seams of the artificial turf and can damage it. By drastically increasing and virtually "locking" the turf on the NEXXPAD, shear stresses are absorbed by the NEXXPAD and automatically reduced on the seams.



PROVEN SHOCK ABSORBENCY = PROVEN SAFETY

Football players usually like fast and firm surfaces which are normally not adequate for safety; preventing injuries must remain crucial. As tackle, jumping and diving are part and parcel of the football game, it is important for a field surface to have great shock absorption characteristics. The shock absorbency level is measured with the ASTM Gmax testing method.



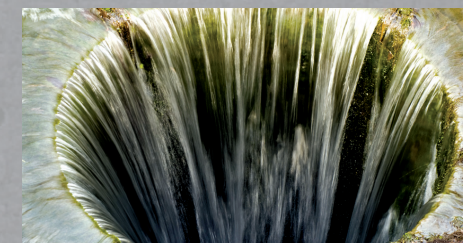
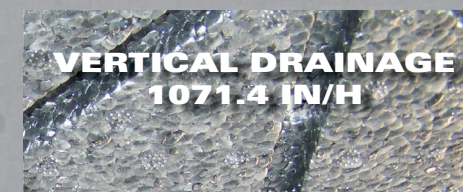
- Lowest Gmax rating ensures head safety during an impact with the ground and can help prevent traumas resulting from major head impacts.

R.A.C (REBOUND AIR CONTROL)

Rebound Air Control is a system exclusive to Nexxfield and to its NEXXPAD underlayment. This principle consists of a 4mm air cushion between the underlayment and surface cover. This air cushion is flexible enough not to interfere with the players' comfort and stability yet provides sufficient pneumatic resistance to reduce ball bounce by 15%. This technology allows Nexxfield systems to achieve ball bounce meeting the highest international standards.



NEXXDRAIN



MAIN PROPERTIES

- Rebound Air Control technology incorporated
- Nexxdrain technology incorporated
- Carpet Anti-Slip technology incorporated
- High-energy absorption with low weight
- High resilience following static and dynamic loading
- Supports static loads of up to 70psi*
- Energy absorption essentially unchanged after repeated impact load
- Negligible water absorption
- 100% non-toxic
- Lead-free
- Simplifies base construction
- Allows for lateral drainage between the base and the turf
- Functions reliably over a wide range of temperatures (-30 to +70°C)
- Good resistance to chemicals, oils and good insulating properties
- Environmentally friendly
- Recyclable in multiple ways



* Internal test results.

We've created a solution with players in mind.